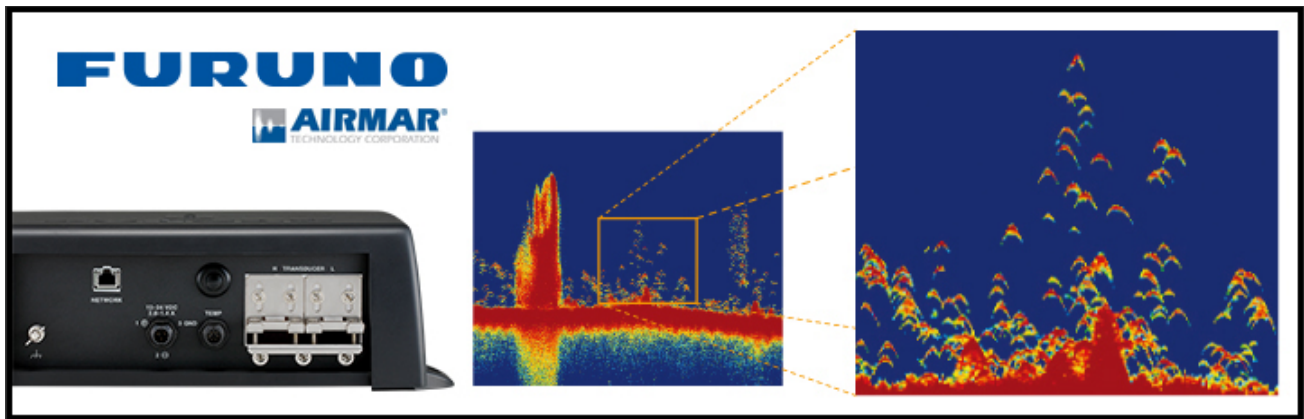


## Recommended Sounder Settings: Furuno DFF3 & Airmar R299



- **Clutter:** 30-40 adjust as you need to (adjust so light speckle can be seen in water column)
- **TVG:** LF set between 6-9 (adjust this setting higher as you go into deeper water)
- **Transmit Rate Auto:** Set to OFF
- **Transmit Rate Manual:** Set to 20
- **Transducer Setup:** Transducer Setup Type – Select MANUAL  
For HF – Set Frequency 155kHz / Bandwidth HF set to 50  
For LF – Set Frequency 45kHz / Bandwidth LF set to 21
- **LF TX Pulse:** Set to LONG for Deep, STANDARD for Mid, SHORT for Shallow
- **LF RX Band:** Set to NARROW
- **HF TX Pulse:** Set to SHORT2
- **HF RX Band:** Set to WIDE
- **LF Gain Offset:** Set to +20
- **HF Gain Offset:** Set to +20
- **Picture Advance:** Adjust as you go deeper (this will spread 1 full cycle along a bigger area of the screen and get rid of “jagged bottom”)
- **Frequency Adjust LF:** Set between -40 and -50
- **Frequency Adjust HF:** Set between 20 and 35
- **Bottom Level LF:** Set to -20
- **Bottom Level HF:** Set to -20

The Bandwidth, or “Slewing Range” allows the operator the ability to adjust the Frequency 50% above and 50% below the Starting Frequency within the set range parameters.

For example: If the Starting Frequency is 40kHz and the Bandwidth is set at 20kHz, you will be able to Slew 10kHz above and 10kHz below. You can access this setting under your sounder settings then the setting is called “Frequency Adjust”.

---

When sea trialling vessel – put motor hard up on transom, Trim Angle is 0 or -0.5, set vessel to trolling speed and see if any noise is induced. If so, try slewing frequency down in your sounder settings – this will enable you to TX/RX on a frequency that is less susceptible to noise therefore you can run your Gain higher and Clutter lower.

---

### **Picture Advance Setting**

For 100m below: Set to 1/1

For 100-500m: Set to 2/1

For 500m over: Set to 4/1

---

### **For Deep Water**

ACCU-FISH™ must be turned OFF, Frequency set to LF, Manual Range, set Sounder to MANUAL and adjust Gain as you need it to get longer traces on seafloor.

### **For Shallow Water**

You can use “AUTO FISHING” or again set to MANUAL and adjust Gain as you need it for the sort of fishing you are doing.