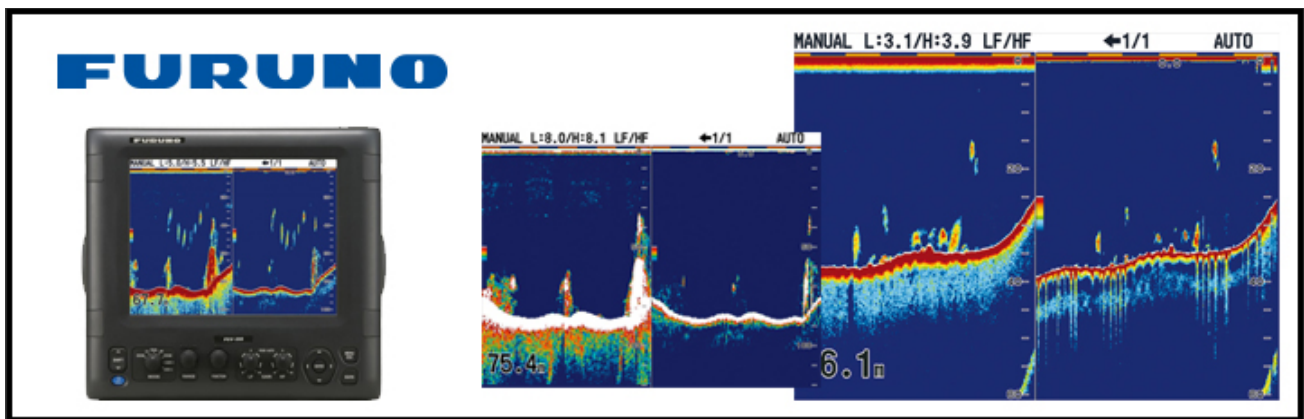


## Recommended Sounder Settings: Furuno FCV295 & 50/2001T (Deep Sea Fishing)



- **Clutter:** 20-30 adjust as you need to (adjust so light speckle can be seen in water column)
- **TVG:** LF set between 6-9 (adjust this setting higher as you go into deeper water)
- **TVG Depth:** Adjust to 100m below paper chart depth
- **Transmit Rate Manual:** Set to 20
- **Target Type:** Set to DEEP SEA (you can find this setting under MENU > TTX)
- **LF TX Pulse:** Set to LONG
- **LF RX Band:** Set to NARROW
- **HF TX Pulse:** Set to SHORT2
- **HF RX Band:** Set to WIDE
- **LF Gain Offset:** Set to +10
- **HF Gain Offset:** Set to +10
- **Picture Advance:** Adjust as you go deeper (this will spread 1 full cycle along a bigger area of the screen and get rid of “jagged bottom”)
- **Colour Erase:** Adjust between 10 and 30 (this will get rid of your lighter colours through to your darker colours. Adjust this setting to get nice scatter line.)

### For Deep Water

Frequency set to LF, Manual Range, set Sounder to MANUAL and adjust Gain as you need it to get longer traces on seafloor.

### For Shallow Water

You can use “AUTO FISHING” or again set to MANUAL and adjust Gain as you need it for the sort of fishing you are doing. Set TVG to 3 or 4 for HF and set Depth for PAPER CHART DEPTH.