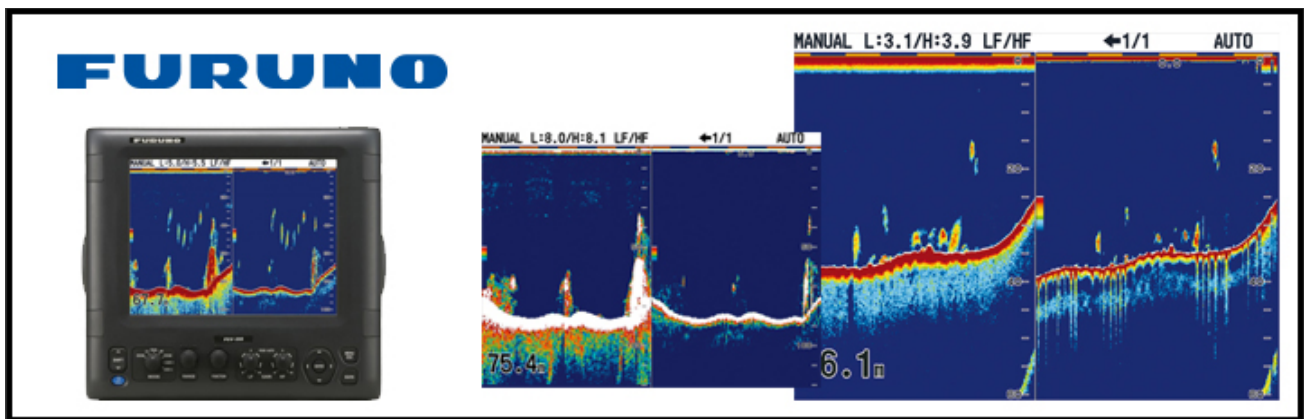


Recommended Sounder Settings: Furuno FCV295 & 200B8B + 38BL



- **Clutter:** 20-40 adjust as you need to (adjust so light speckle can be seen in water column)
- **TVG:** LF set between 6-7 (adjust this setting higher as you go into deeper water)
- **TVG Depth:** Adjust to 100m below what you are dropping in
- **Transmit Rate Manual:** Set to 20
- **Transducer Setup:** Transducer Setup Type – Select MODEL
For HF – Set Model 200B8B
For LF – Set Model 38BL-9HR / 38BL-15HR
- **LF TX Pulse:** Set to LONG for Deep, STANDARD for Mid, SHORT for Shallow
- **LF RX Band:** Set to NARROW
- **HF TX Pulse:** Set to SHORT2
- **HF RX Band:** Set to WIDE
- **Picture Advance:** Adjust as you go deeper (this will spread 1 full cycle along a bigger area of the screen and get rid of “jagged bottom”)

For Deep Water

Frequency set to LF, Manual Range, set Sounder to MANUAL and adjust Gain as you need it to get longer traces on seafloor.

For Shallow Water

You can use “AUTO FISHING” or again set to MANUAL and adjust Gain as you need it for the sort of fishing you are doing.