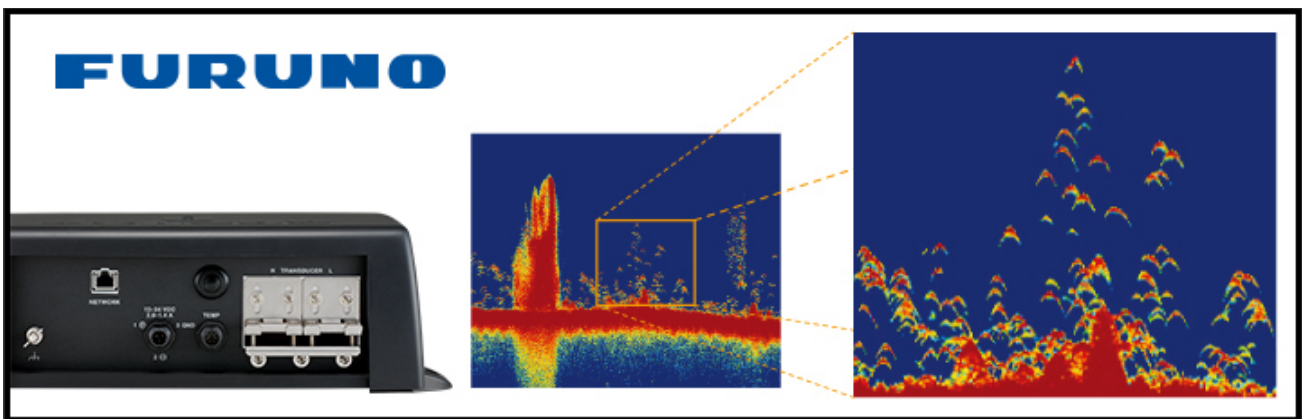


Recommended Sounder Settings: Furuno DFF3 & 38/200kHz



- **Clutter:** 30-60 adjust as you need to (adjust so light speckle can be seen in water column)
- **TVG:** LF set between 6-9 (adjust this setting higher as you go into deeper water)
- **Transmit Rate Manual:** Set to 20
- **Transducer Setup:** Transducer Setup Type – Select MANUAL
For HF – Set Frequency 200kHz / Bandwidth HF set to 30
For LF – Set Frequency 38kHz / Bandwidth LF set to 21
- **LF TX Pulse:** Set to LONG for Deep, STANDARD for Mid, SHORT for Shallow
- **LF RX Band:** Set to NARROW
- **HF TX Pulse:** Set to SHORT
- **HF RX Band:** Set to WIDE
- **LF Gain Offset:** Set to +20
- **HF Gain Offset:** Set to +20
- **LF Gain Offset:** Set between -10 and -20
- **HF Gain Offset:** Set between -10 and -20
- **Transmission Power:** Set to 7 or 8
- **Picture Advance:** Set to 1/1, increase as you go deeper (this will spread 1 full cycle along a bigger area of the screen and get rid of “jagged bottom”)

For Deep Water

Frequency set to LF, Manual Range, set Sounder to MANUAL and adjust Gain as you need it to get longer traces on seafloor.

For Shallow Water

You can use "AUTO FISHING" or again set to MANUAL and adjust Gain as you need it for the sort of fishing you are doing.