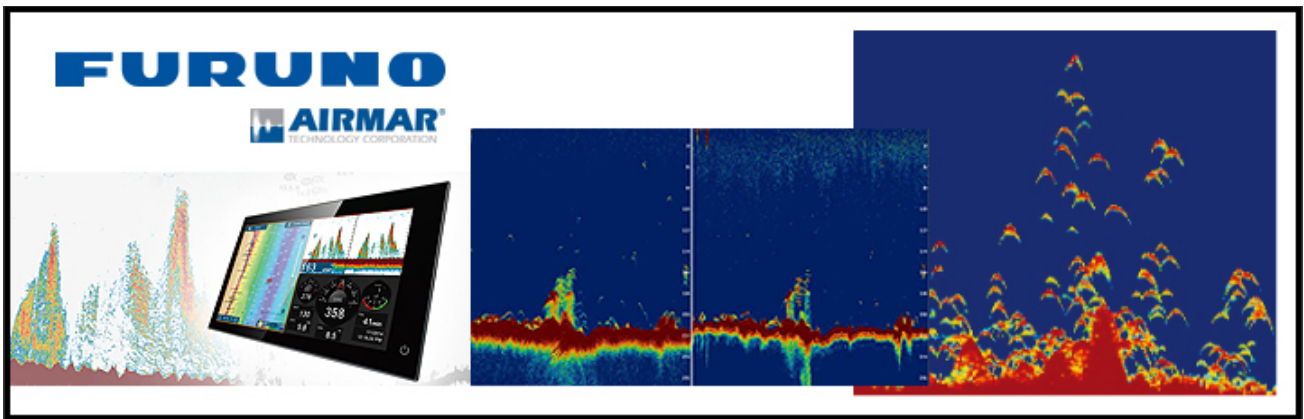
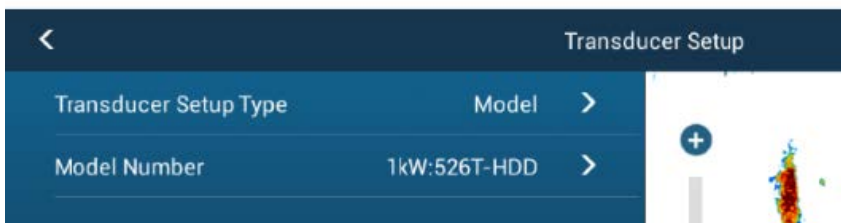


Recommended Sounder Settings: Furuno NavNet TZtouch2 & Airmar TM260 (Deep Water)



Initial Settings

First go to the SOUNDER menu, select TRANSDUCER SETUP, select MODEL, and then select 1kW-526T-HDD



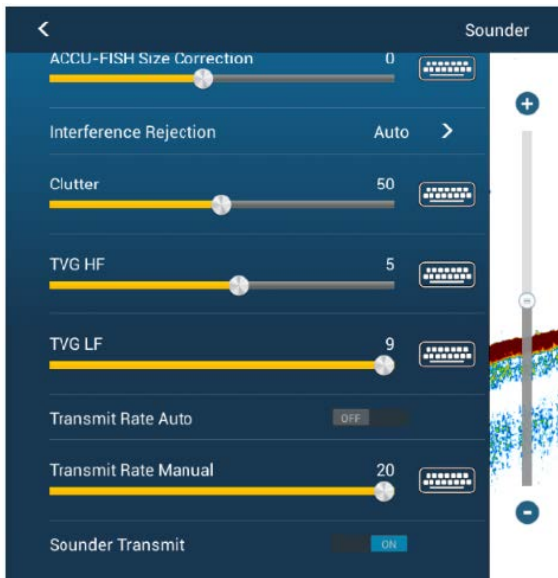
Adjust the SOUNDER settings as per below:

- **Transmission Power:** 11
- **Bottom Level HF and LF:** -20
- **Gain Offset HF and LF:** 20



Tuning Settings

- **Clutter:** 40-80 adjust as you need to (adjust so light speckle can be seen in water column)
– only adjustable in MANUAL mode
- **TVG:** LF set between 7-9 (adjust this setting higher as you go into deeper water)
- **Transmit Rate Auto:** Set to OFF
- **Transmit Rate Manual:** Set to 20



Operation Settings

For Deep Water

ACCU-FISH™ and Bottom Discrimination must be turned OFF, Frequency set to LF, Manual Range (this prevents the bottom auto-searching if it is lost due to aeration), set Sounder to MANUAL and adjust Gain as you need it to get longer traces on seafloor.

For Shallow Water

You can use "AUTO FISHING" or again set to MANUAL and adjust Gain as you need it for the sort of fishing you are doing.